


Item number: TRT.00.640.10800/B

Revision: 00 · Date: 01 - 2024

EVO top ring

 ~ 0.5 h.

EASY  DIFFICULT

ENGLISH Thank you for choosing this premium product from SW-MOTECH. Visit our online shop for more information (e.g. model assignments). Required documents (e.g. national type approval) are available there for you to download.

Please read and understand all the instructions, safety information and warnings in these mounting instructions before mounting and using the product in order to avoid injury and damage. Keep these mounting instructions for reference.

This product was developed for vehicles in factory condition. Compatibility with original accessories or accessories from other manufacturers cannot be guaranteed.

These mounting instructions have been prepared to the best of our current knowledge. No legal claims relating to accuracy can be made. Errors and omissions excepted. We reserve the right to make technical and design changes. The copyright is held by SW-MOTECH.

SAFETY WARNING SYMBOL

 This warning symbol is used in these mounting instructions to warn of deadly dangers, injuries or other hazards. The words **DANGER**, **WARNING** or **CAUTION** are used as part of this warning symbol to convey important safety messages and information relating to the installation and use of this product. These words, together with the safety warning symbol, mean:

 **DANGER:** Indicates a hazardous situation which, if not avoided, will result in death or serious injury!

 **WARNING:** Indicates a hazardous situation which, if not avoided, may result in death or serious injury!

 **CAUTION:** Indicates a hazardous situation which, if not avoided, may result in minor or moderate injury!

 **NOTE:** Important information, but not relating to a risk of death or injury (property damage only)!

GENERAL INFORMATION


 **WARNING:** Assembly and/or maintenance of this product requires advanced technical skill, appropriate tools, and a good understanding of tool usage and torque specifications. For your own safety, SW-MOTECH recommends having the assembly and/or maintenance carried out by a qualified and certified motorcycle workshop.


 **WARNING:** If you do choose to assemble this product yourself, carefully and fully read the mounting instructions before assembly and use, and follow all instructions to avoid serious injury or death. Also observe all relevant information in the vehicle manual when mounting or using the product. IF YOU DO NOT UNDERSTAND ANY PART OF THESE MOUNTING INSTRUCTIONS OR NEED AN EXPLANATION AS TO A SPECIFIC INSTRUCTION, DO NOT ATTEMPT TO INSTALL THIS PRODUCT WITHOUT CONSULTING SW-MOTECH FOR ASSISTANCE!

PREPARATION: Read the mounting instructions carefully and make sure that all parts on the parts list are available.

 **CAUTION:** Ensure that your vehicle is standing securely. Switch off the engine and remove the ignition key. Allow the engine/exhaust to cool down if necessary. Disconnect the battery when working on the electrical system. Only use proper tools and always wear safety goggles and gloves during assembly and maintenance. Have a second person help you with assembly and maintenance.

ASSEMBLY: All parts and connections removed from the vehicle must be reinstalled according to the vehicle manufacturer's specifications or replaced with parts and hardware supplied by SW-MOTECH.

 **WARNING:** Secure all threads with a medium-strength liquid threadlocker, unless otherwise specified.

 **DANGER:** Tightening torques not defined by SW-MOTECH must be obtained from the vehicle manufacturer or a certified motorbike workshop.

FUNCTIONAL CHECK: After mounting the product, ensure that no moving parts are obstructed and that the function of the vehicle is not impeded. Cables and hoses must not rub against each other and/or be hindered in any way.

 **WARNING:** Carry out a comprehensive functionality check before you start to drive. Check the tightening torque of all connections and the tight fit of the product after the first 50 km and then at regular intervals. Mounted accessories can change the handling and stability of the vehicle.



SW-MOTECH GmbH & Co. KG
Ernteweg 7-10
35282 Rauschenberg
Germany



info@sw-motech.com
www.sw-motech.com

LEGEND OVERVIEW - READ AND KEEP MOUNTING INSTRUCTIONS!



Take note of the symbols and what they mean in the ASSEMBLY section. If the term OEM appears in the ASSEMBLY section, the vehicle manufacturer's specifications must be observed and applied.



If you have any questions, please don't hesitate to contact our Customer Service team or our distributors. You can find our telephone number and a list of our distributors in our online shop:

www.sw-motech.com



Do not use thread lock: Indicates that no liquid thread lock should be used at this point.



Tighten/note the tightening torque information:

Indicates the tightening torque of a part specified by SW-MOTECH or the vehicle manufacturer (OEM).

PARTS LIST - READ AND KEEP MOUNTING INSTRUCTIONS!

1

1 
TRT.00.640.500
 1/1



3

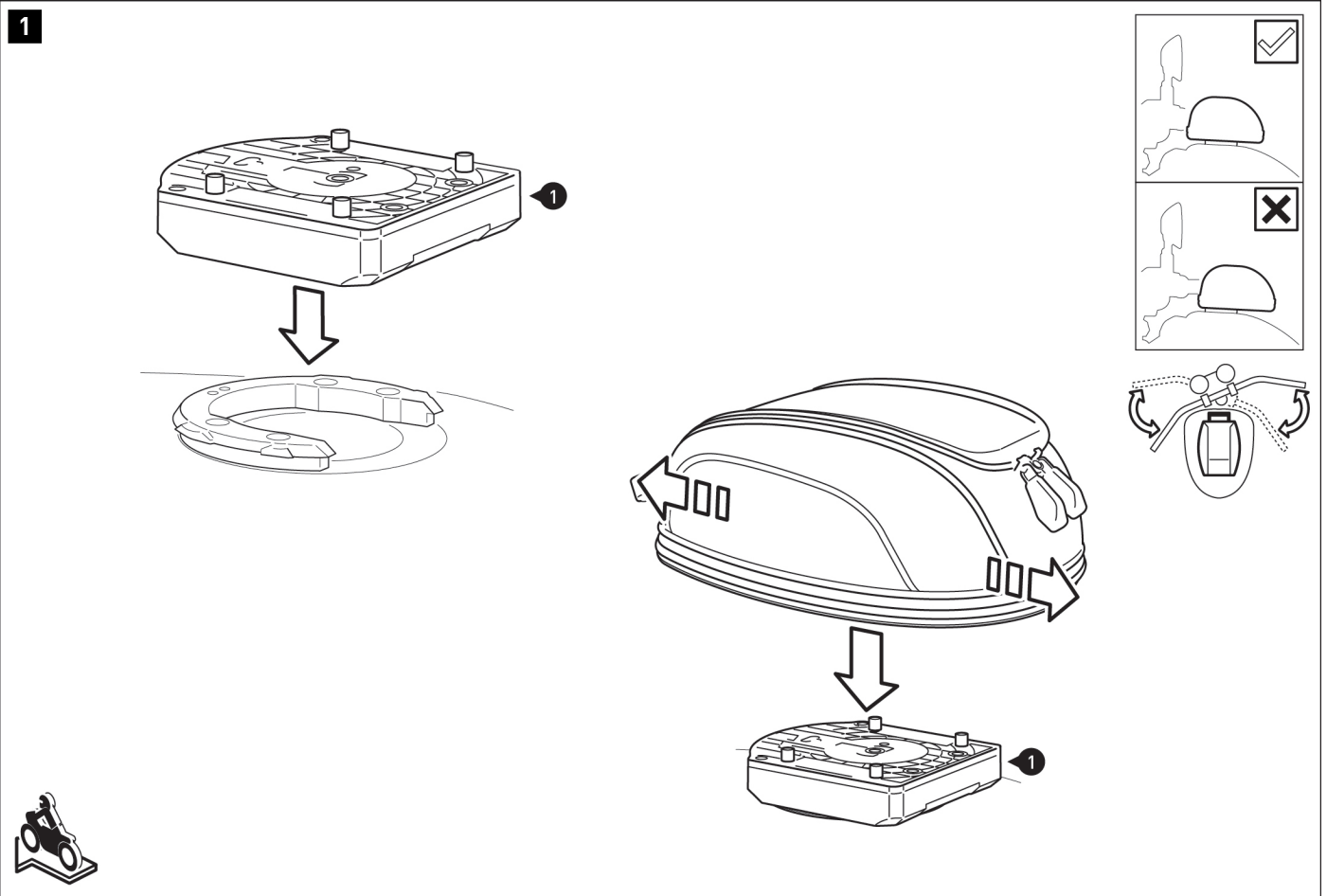
2 
TRT.00.640.027
 1/1

3 
BOH.HSS.085.118.0338
 1/1

4

4 
M5 x 10; ISO 7380 SC.ST.05.010.02.73800.109
 4/4

5 
ISK.911.03
 1/1



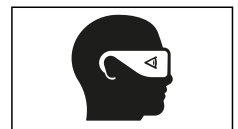
⚠ WARNING: Always wear eye and hand protection!
⚠ WARNING: Always use the proper tools!

⚠ NOTE: The EVO tank bag shown serves as an example.

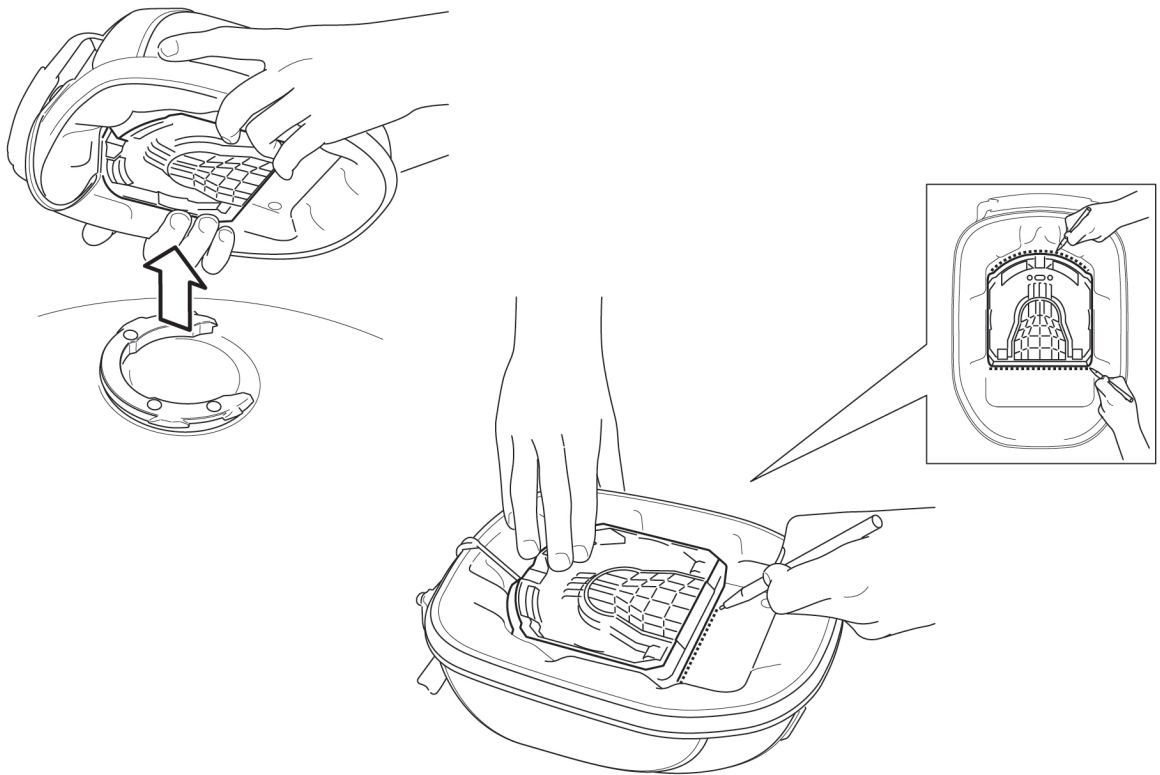
Place the EVO top ring (1) onto the assembled EVO tank ring.

Then place your EVO tank bag onto the EVO top ring. Position the EVO tank bag according to your driving habits.

⚠ DANGER: After installation, make sure that all switch and control units, especially the throttle assembly, brake lever, emergency stop switch and clutch, function properly and are easy to use!
 Also make sure that the handlebars can be fully turned in both directions. If parts of the product come into contact with the tank or other vehicle components when the steering wheel is at full lock, repositioning the product or the handlebars is absolutely necessary!
 Make sure that the installation complies with the vehicle manufacturer's specifications! **DO NOT** ride your vehicle if the switch and control units are not functioning correctly or cannot be operated correctly!
BEFORE every ride, carry out a complete functional check of the handlebars and all fittings!



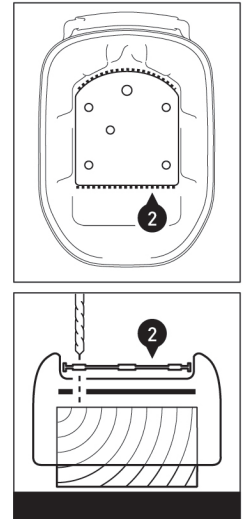
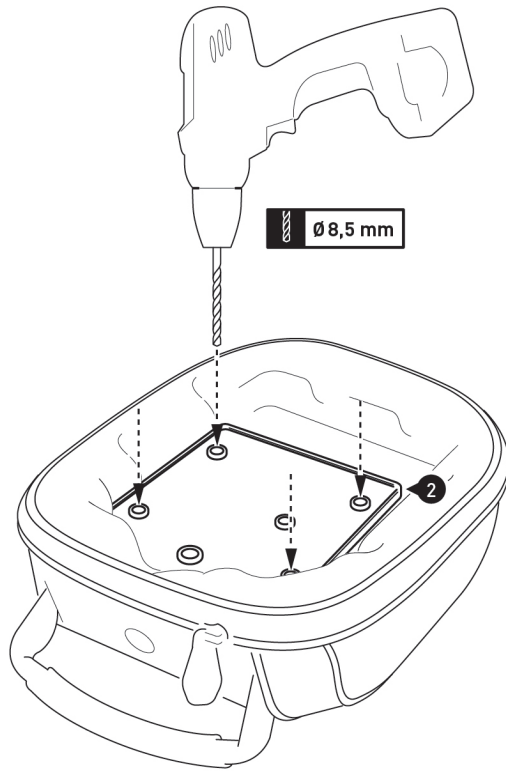
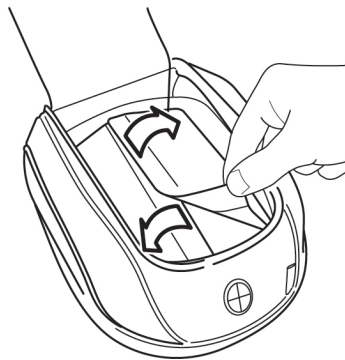
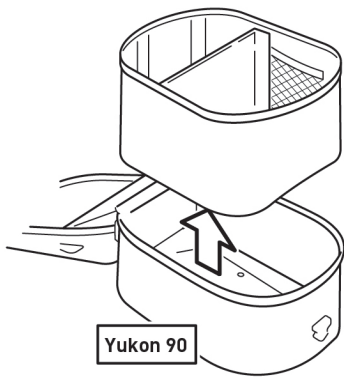
2



Remove the EVO tank bag WITH the EVO top ring from the EVO tank ring.
Make sure to keep the EVO top ring in position under the EVO tank bag.

Now mark the position of the EVO top ring.

3



▲ WARNING: Risk of injury!

Only EVO tank bag Yukon 90:
Open the lid, and remove the inner storage.

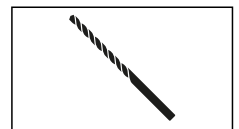
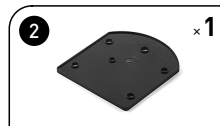
All other EVO tank bags:
Open the internal textile cover, and remove it completely from the reinforcement plate (see detailed drawing below).

Place the drilling template [2] under the EVO tank bag according to the markings.

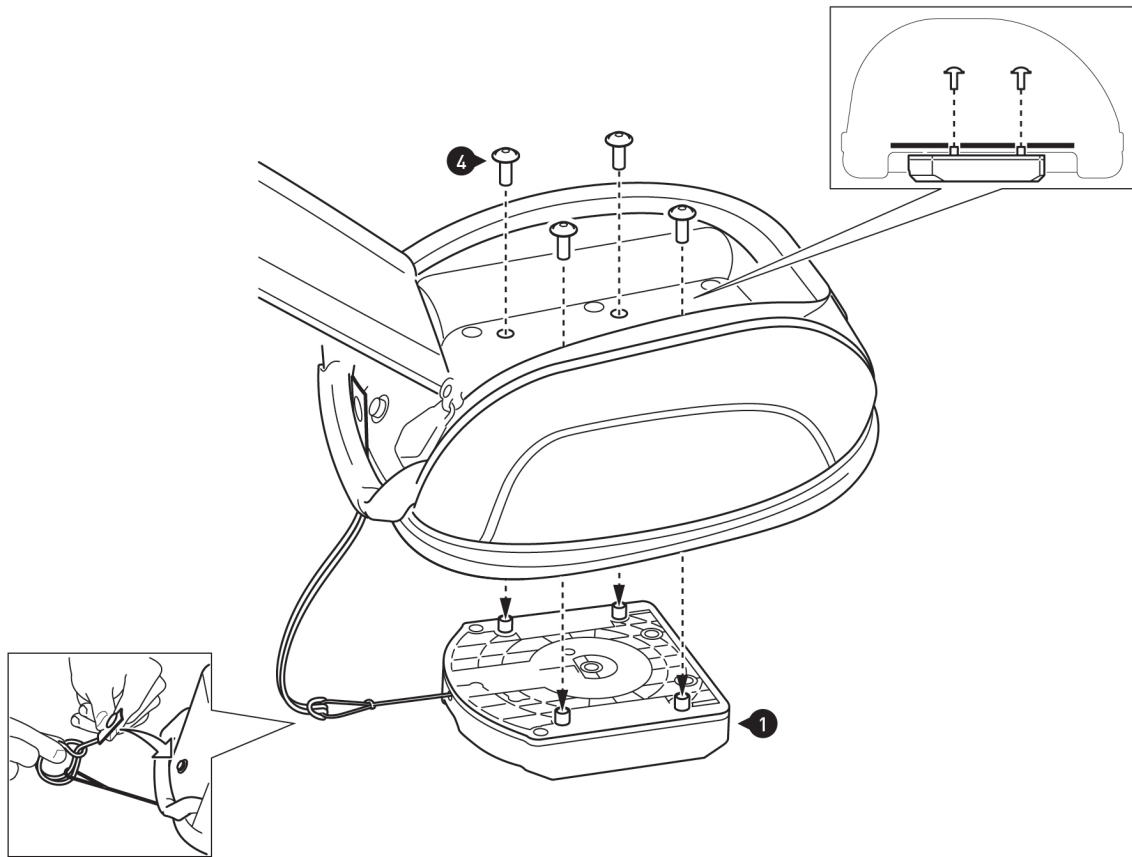
Drill through the holes in the drilling template [2] as shown. Use the 8.5 mm drill bit [3] included to drill the mounting holes from the outside of the EVO tank bag.

▲ WARNING: When drilling, place a piece of wood on the opposite side.

If the EVO lock kit is to be used, use a 5.5 mm drill to drill out the "anti-theft protection" drilling position.
SW-MOTECH assumes no liability for damage to the tank bag and/or vehicle caused by drilling.

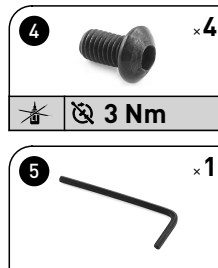


4

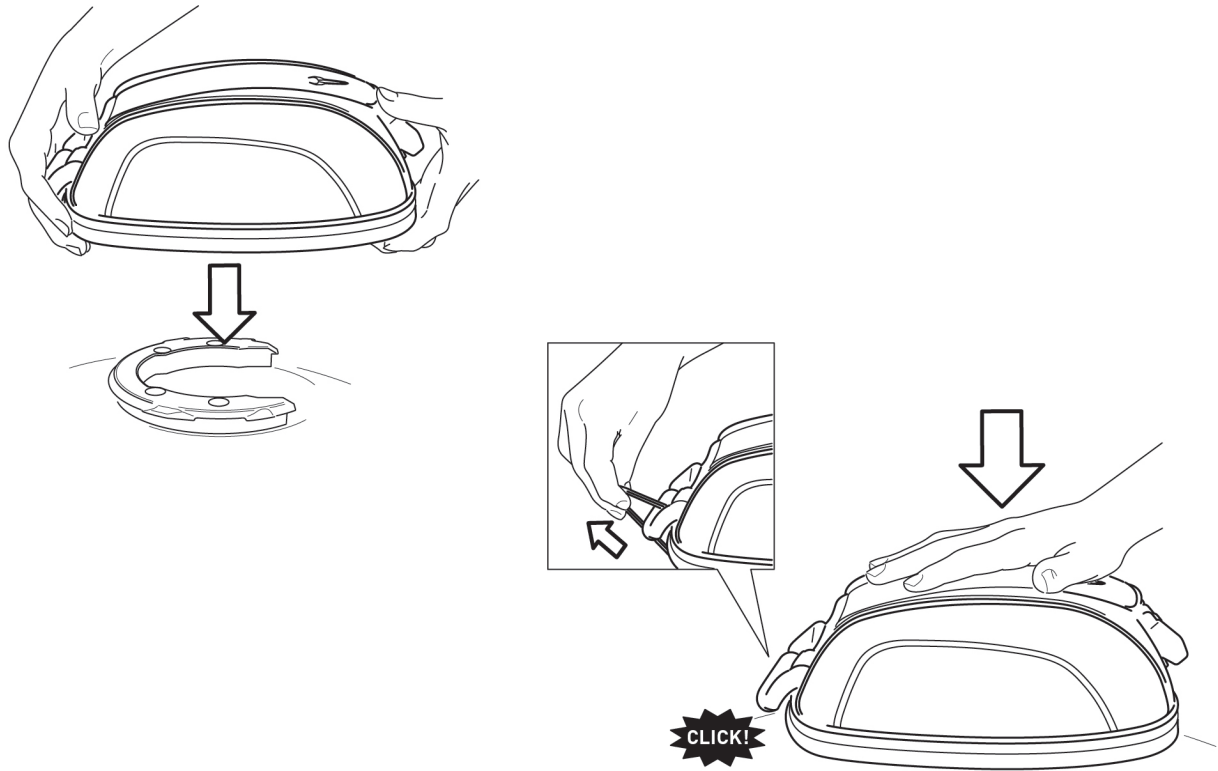


Screw the EVO top ring under the EVO tank bag.
Tighten the screw (4) as specified in the mounting instructions.

Attach the pull cord of the EVO top ring to the pull strap of the EVO tank bag.



5



⚠ NOTE: Soiling on the vehicle has a grinding effect and can damage surfaces such as the paintwork. Use an adhesive protective foil in order to protect the vehicle paint from scratches. SW-MOTECH assumes no liability for damage to the paintwork.

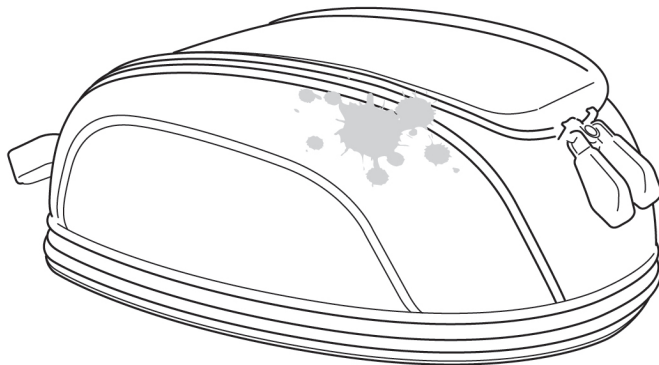
Place the EVO tank bag with the EVO tank top ring installed onto the EVO tank ring from above.

Press the EVO tank bag firmly onto the EVO tank ring. Listen for the clearly audible click. Then check that the EVO tank bag is firmly seated.

To release the EVO tank bag, simply pull on the pull strap.

6

✓ OK



LOADING

- ⚠ **WARNING:** Never store sharp-edged, pointed or similar objects!
- ⚠ **DANGER:** MAXIMUM LOAD: 3 kg (6.6 lbs)

CARE

- ⚠ **CAUTION:** Use **ONLY** a soft fabric brush, cloth or sponge and some warm soapy water when cleaning!
Then rinse with clean water.
- Do **NOT** use any harsh cleaning agents, utensils or pressure washer!
- Be sure to clean the product after winter driving in order to avoid damage from the salt.

⚠ **NOTE:** Surface materials can be subject to color changes (fading) in the event of prolonged and intensive exposure to sunlight and weather conditions (e.g. smog, acid rain, etc.)! SW-MOTECH is not responsible for this sort of wear.

PRODUCT-SPECIFIC NOTES

⚠ NOTE: Observe the country-specific regulations for registering/operating your vehicle or the applicable TÜV regulations. After assembly, have parts that are subject to registration entered in the vehicle documents by your test centre.

⚠ DANGER: Since this is a universal product, please make sure that the product can be attached and used properly and seamlessly on your vehicle type BEFORE using it for the first time! After attaching, check that all vehicle parts can move freely and function properly! Lamps such as taillights and turn light indicators must not be impeded in their function! Cables, wires and hoses should not rub and/or squeeze against anything!

⚠ DANGER: Carry out a comprehensive function check before driving!

⚠ DANGER: Check that the product is properly positioned before departure and at every rest stop (every 200 km)!

⚠ DANGER: The driving/braking behavior of the motorcycle changes noticeably after the attachment of this product!

⚠ DANGER: Lean angle and ground clearance may be restricted by this product!

⚠ DANGER: The maximum vehicle load specified by the vehicle manufacturer is applicable!

 see LOAD  ≤ 130km/h (≤ 80mph)