


Item number: BC.TRS.00.411.20000

Revision: 00 · Date: 01 - 2025

Legend Gear tank bag LT3

 ~ 0.5 h.

EASY      DIFFICULT


ENGLISH Thank you for choosing this premium product from SW-MOTECH. Visit our online shop for more information (e.g. model assignments). Required documents (e.g. national type approval) are available there for you to download.

Please read and understand all the instructions, safety information and warnings in these mounting instructions before mounting and using the product in order to avoid injury and damage. Keep these mounting instructions for reference.


This product was developed for vehicles in factory condition. Compatibility with original accessories or accessories from other manufacturers cannot be guaranteed.


These mounting instructions have been prepared to the best of our current knowledge. No legal claims relating to accuracy can be made. Errors and omissions excepted. We reserve the right to make technical and design changes. The copyright is held by SW-MOTECH.


SAFETY WARNING SYMBOL

 This warning symbol is used in these mounting instructions to warn of deadly dangers, injuries or other hazards. The words **DANGER**, **WARNING** or **CAUTION** are used as part of this warning symbol to convey important safety messages and information relating to the installation and use of this product. These words, together with the safety warning symbol, mean:

 **DANGER:** Indicates a hazardous situation which, if not avoided, will result in death or serious injury!

 **WARNING:** Indicates a hazardous situation which, if not avoided, may result in death or serious injury!

 **CAUTION:** Indicates a hazardous situation which, if not avoided, may result in minor or moderate injury!


 **NOTE:** Important information, but not relating to a risk of death or injury (property damage only)!

GENERAL INFORMATION


 **WARNING:** Assembly and/or maintenance of this product requires advanced technical skill, appropriate tools, and a good understanding of tool usage and torque specifications. For your own safety, SW-MOTECH recommends having the assembly and/or maintenance carried out by a qualified and certified motorcycle workshop.


 **WARNING:** If you do choose to assemble this product yourself, carefully and fully read the mounting instructions before assembly and use, and follow all instructions to avoid serious injury or death. Also observe all relevant information in the vehicle manual when mounting or using the product. IF YOU DO NOT UNDERSTAND ANY PART OF THESE MOUNTING INSTRUCTIONS OR NEED AN EXPLANATION AS TO A SPECIFIC INSTRUCTION, DO NOT ATTEMPT TO INSTALL THIS PRODUCT WITHOUT CONSULTING SW-MOTECH FOR ASSISTANCE!

PREPARATION: Read the mounting instructions carefully and make sure that all parts on the parts list are available.


 **CAUTION:** Ensure that your vehicle is standing securely. Switch off the engine and remove the ignition key. Allow the engine/exhaust to cool down if necessary. Disconnect the battery when working on the electrical system. Only use proper tools and always wear safety goggles and gloves during assembly and maintenance. Have a second person help you with assembly and maintenance.

ASSEMBLY: All parts and connections removed from the vehicle must be reinstalled according to the vehicle manufacturer's specifications or replaced with parts and hardware supplied by SW-MOTECH.

 **WARNING:** Secure all threads with a medium-strength liquid threadlocker, unless otherwise specified.

 **DANGER:** Tightening torques not defined by SW-MOTECH must be obtained from the vehicle manufacturer or a certified motorbike workshop.

FUNCTIONAL CHECK: After mounting the product, ensure that no moving parts are obstructed and that the function of the vehicle is not impeded. Cables and hoses must not rub against each other and/or be hindered in any way.

 **WARNING:** Carry out a comprehensive functionality check before you start to drive. Check the tightening torque of all connections and the tight fit of the product after the first 50 km and then at regular intervals. Mounted accessories can change the handling and stability of the vehicle.



SW-MOTECH GmbH & Co. KG
Ernteweg 7-10
35282 Rauschenberg
Germany



 info@sw-motech.com
 www.sw-motech.com



Take note of the symbols and what they mean in the ASSEMBLY section. If the term OEM appears in the ASSEMBLY section, the vehicle manufacturer's specifications must be observed and applied.



If you have any questions, please don't hesitate to contact our Customer Service team or our distributors. You can find our telephone number and a list of our distributors in our online shop:

www.sw-motech.com



Use thread locker: Indicates that a thread must be coated with liquid thread locker. H (HIGH): high strength; M (MEDIUM): medium strength; L (LOW): low strength.



Tighten/note the tightening torque information:

Indicates the tightening torque of a part specified by SW-MOTECH or the vehicle manufacturer (OEM).

PARTS LIST - READ AND KEEP MOUNTING INSTRUCTIONS!

1


1




TRT.00.787.10000/B

 1/1

2



BC.ZUB.00.156.30000

 1/1

2

3



BC.TRS.00.411.20000

 1/1

3


4




M5 x 16; ISO 7380
SC.ST.05.016.45.73800.109

 4/4

5



ISK.911.03

 1/1

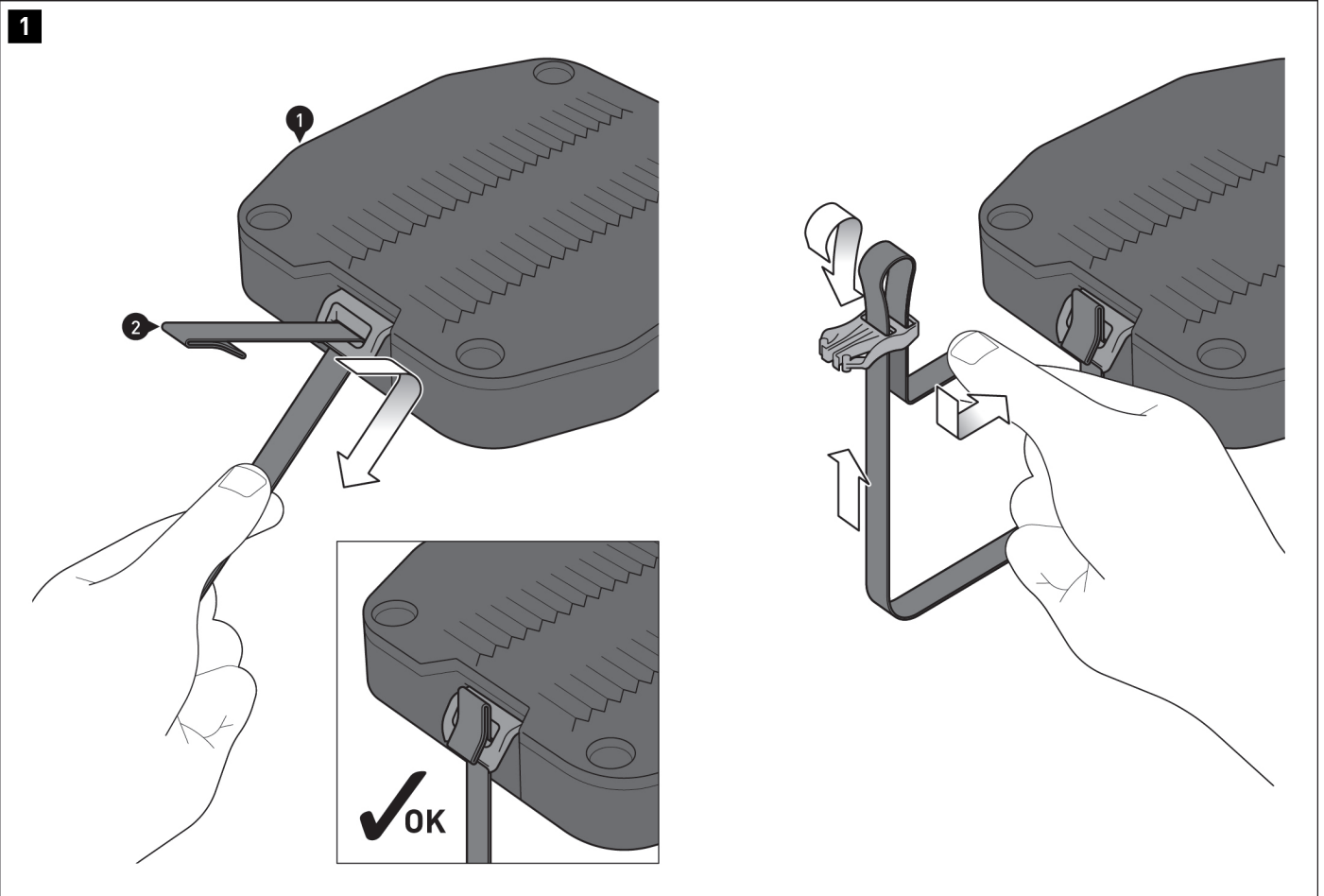
6

6



BC.ZUB.00.145.30000

 1/1

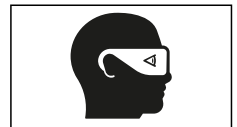
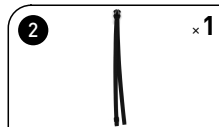


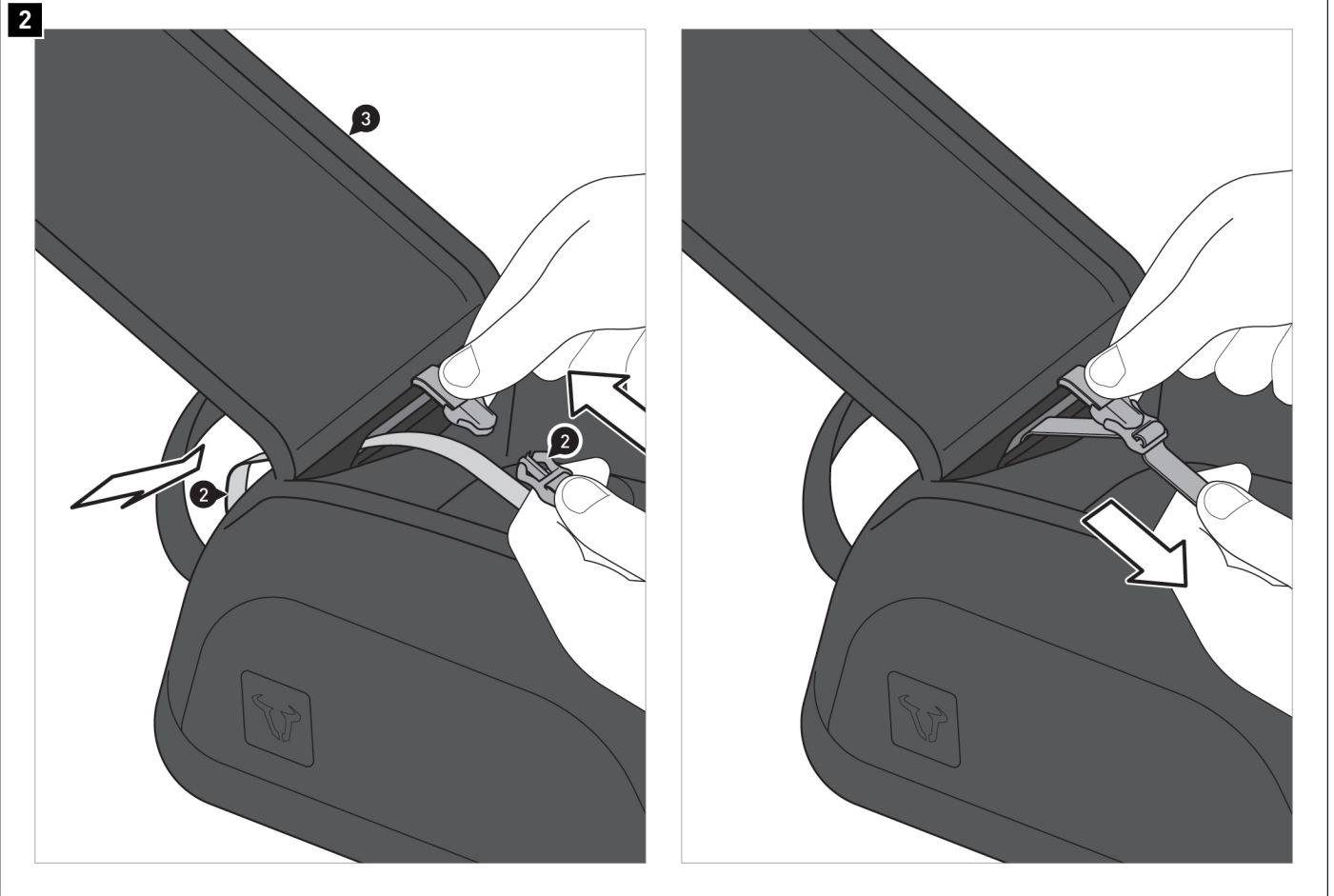
⚠ WARNING: Always wear eye and hand protection!
⚠ WARNING: Always use the proper tools!

⚠ NOTE: Pay attention to the positioning of the reinforced end piece!

Pass the pull strap [2] through the eyelet of the release mechanism located on the top ring [1].

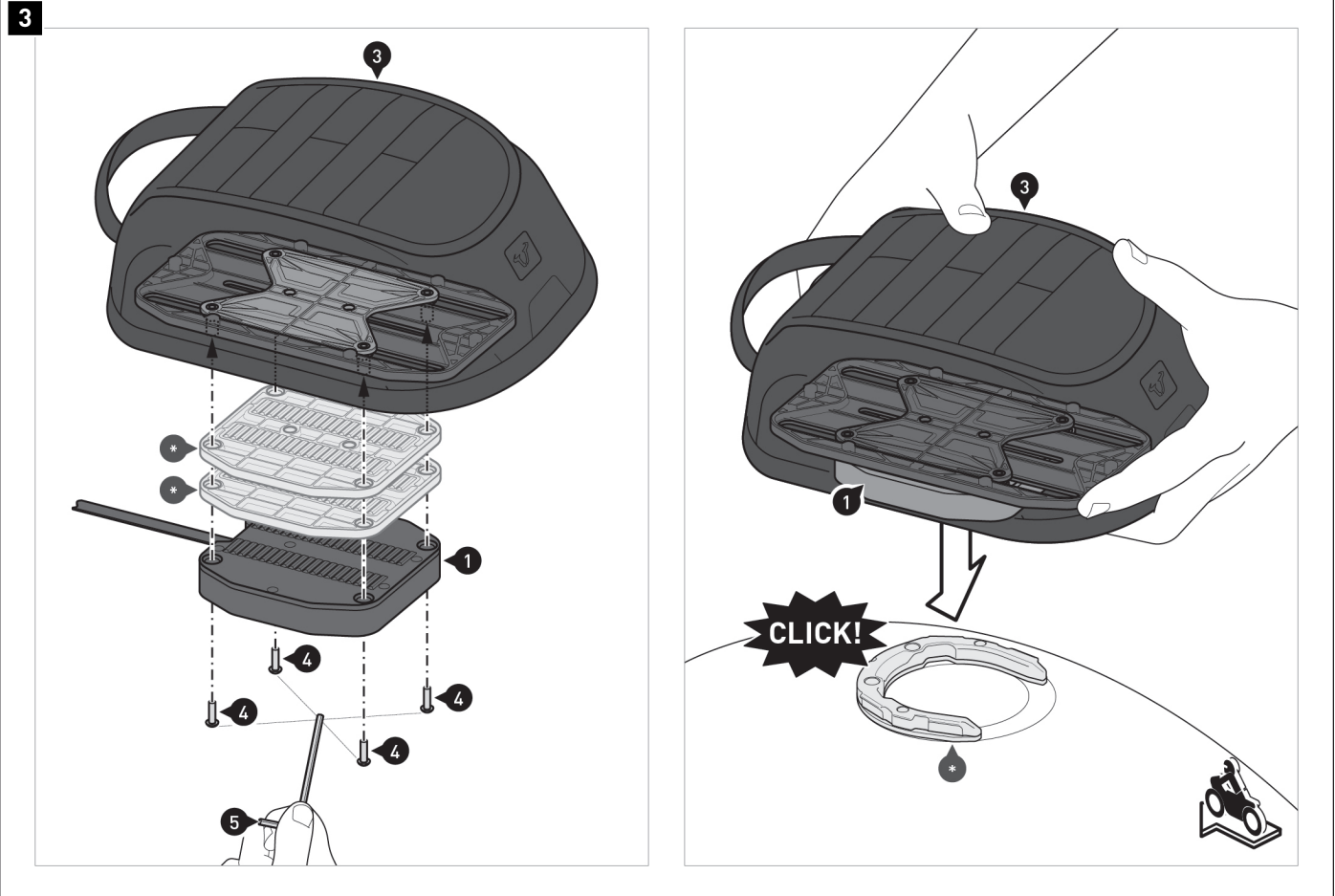
Reconnect the buckle connector to the pull strap [2].





Guide the end of the pull strap [2] with the buckle connector through the front cable feed-through of the tank bag [3].
Connect the buckle connector to the buckle case inside the tank bag [3].
Tighten the pull strap [2].





⚠ NOTE: Some tank models require a height increasing element (sold separately) (*). TRT.00.787.1010* for additional 6 mm. TRT.00.787.1020* for additional 12 mm. In the latter case, screws (4) are not required; instead, attach using the screws provided with the height increasing element (*).

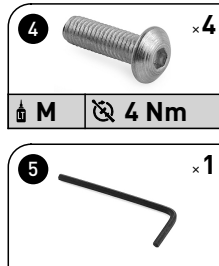
⚠ NOTE: The tank ring (*) is sold separately.

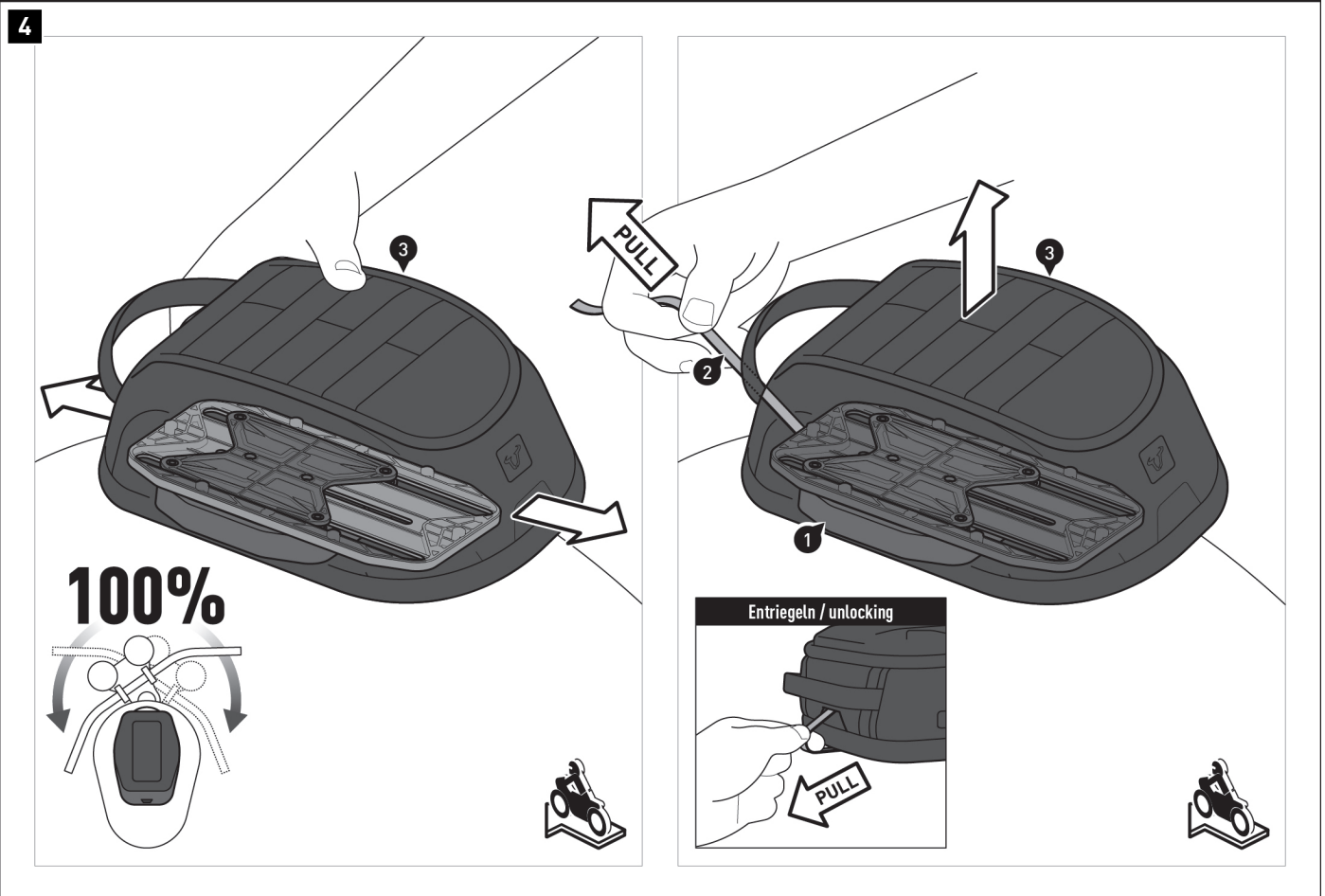
Loosely screw the top ring (1) to the adjustment plate located on the tank bag (3).

⚠ WARNING: Use a liquid threadlocker!

The top ring (1) must still be able to be moved.

To **adjust**, place the tank bag (3) with the top ring (1) onto the attached tank ring (*).





⚠ NOTE: Dirt on the vehicle may damage surfaces such as the paintwork! If the required distance cannot be ensured, use adhesive protective foil or a tank pad. SW-MOTECH accepts no liability for paint damage!

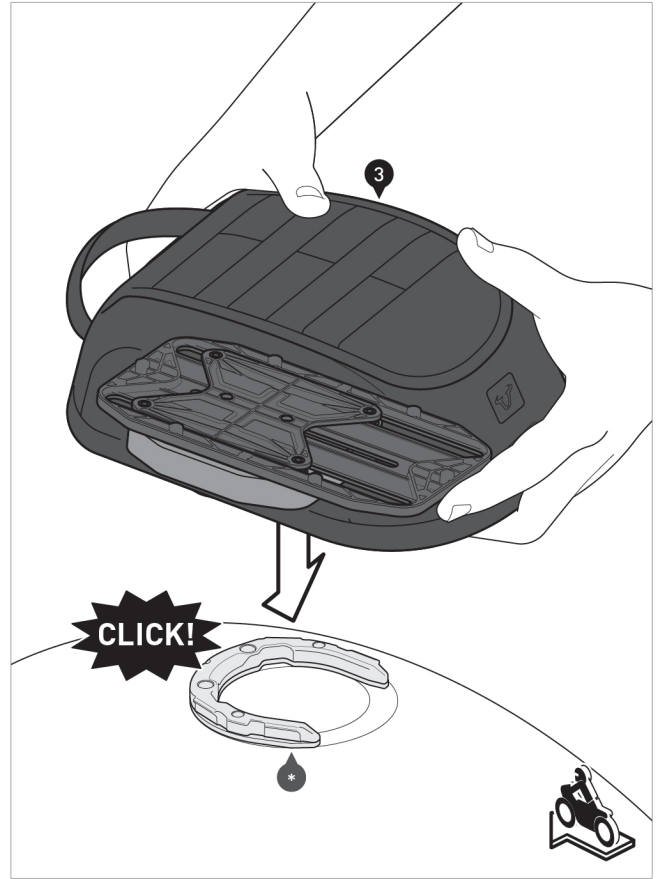
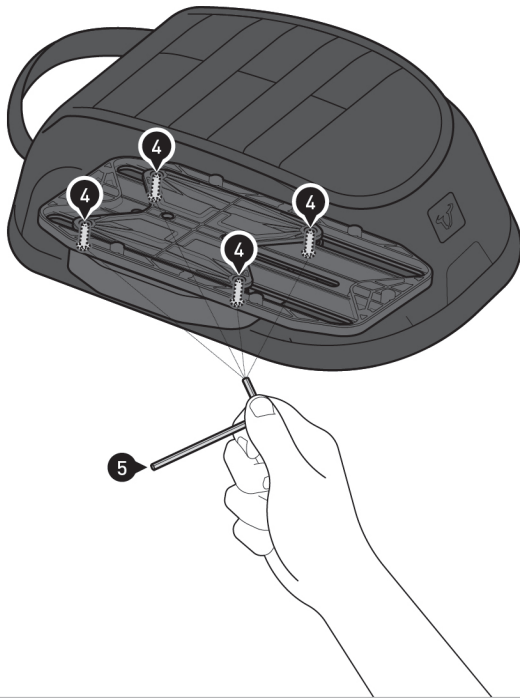
Position the tank bag (3) over the guide rail according to your personal preference.

⚠ WARNING: Ensure that the handlebars and controls are uninhibited and that the tank bag (3) is evenly and securely positioned on the tank! Also ensure that there is sufficient space between the tank bag (3) and the surface of the tank in all circumstances (e.g. when loading and unloading) to avoid paint damage!

Unlock the top ring (1) by pulling on the pull strap (2). Carefully remove the tank bag (3) upwards away from the tank ring (*) without moving the top ring (1).

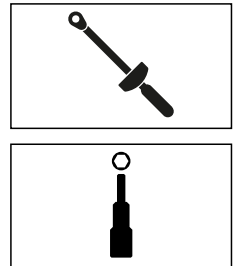
Tip: If the top ring (1) shifts during removal, tighten the screws (4) loosely enough so that the top ring (1) can still be moved.

5

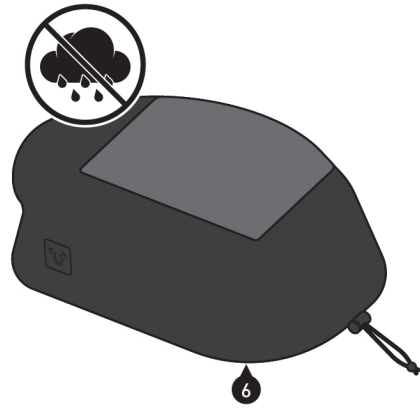


Now tighten the screws [4] as specified in the mounting instructions.
▲ WARNING: Over-tightening the screws will damage plastic parts!

Place the tank bag [3] back onto the tank ring (*).
Listen for the clearly audible click.



6



LOADING

⚠ **NOTE:** Make sure to never store sharp-edged, pointed or similar objects that could cause personal injury or damage to the vehicle or tank bag! Store sensitive luggage in the mesh compartment!

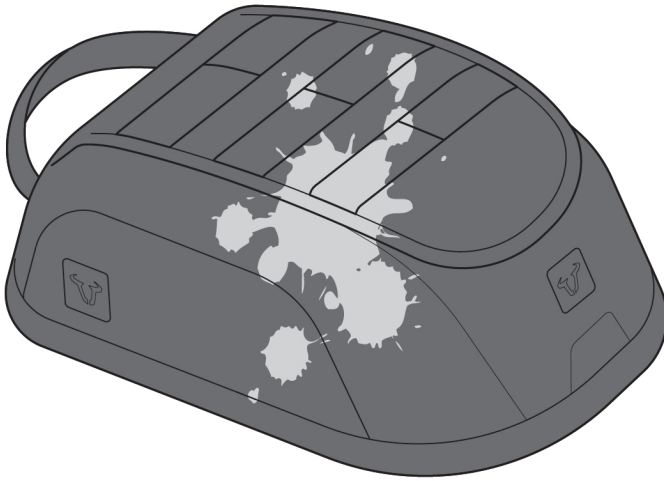
⚠ **NOTE:** The MOLLE system is to be used **only** with select SW-MOTECH products!

⚠ **NOTE:** Always use the enclosed rain cover (6) to protect your luggage from water!

⚠ **WARNING:** Maximum load is 3 kg!



7



CARE

To clean, use **ONLY** a soft textile brush, cloth or sponge and some warm soapy water! Then rinse with clean water.
Do **NOT** use any harsh cleaning agents, abrasive cleaning utensils or pressure washers! Be sure to clean the tank bag after winter driving to avoid salt damage.

△ NOTE: Surface materials may be subject to fluctuations in color (fading) if exposed to prolonged and intense sunlight or the elements (e.g. smog, acid rain, etc.)! SW-MOTECH accepts no liability for this type of wear!

PRODUCT-SPECIFIC NOTES

⚠ NOTE: Observe the country-specific regulations for the registration/operation of your vehicle or applicable TÜV regulations. Have parts that require registration entered in the vehicle documents by your test center after installation.

⚠ DANGER: Since this is a universal product, please make sure that the product can be attached and used properly and seamlessly on your vehicle type **BEFORE** using it for the first time! After attaching, check that all vehicle parts can move freely and function properly! Lamps such as taillights and turn light indicators must not be impeded in their function! Cables, wires and hoses should not rub and/or squeeze against anything!

⚠ DANGER: Carry out a comprehensive functional check before starting your journey!

⚠ DANGER: Check that the product sits firmly in place before starting your journey and at every rest stop (every 200 km)!

⚠ DANGER: The driving/braking behavior of the motorcycle changes noticeably after the attachment of this product!

⚠ DANGER: Lean angle and ground clearance may be restricted by this product!

⚠ DANGER: Not suitable for offroad use!

⚠ DANGER: The maximum vehicle load defined by the vehicle manufacturer may **NOT** be exceeded.

 see **LOAD**  **≤ 130km/h (≤ 80mph)**